

Venetian & Wooden Blinds



A Blind for every window

The Protectors always kept the highest standards of quality and fashion. Over the years we have developed and introduced many new products, and today can proudly boast that we offer a blind to suit every window, in an unrivalled range of styles, and colors.



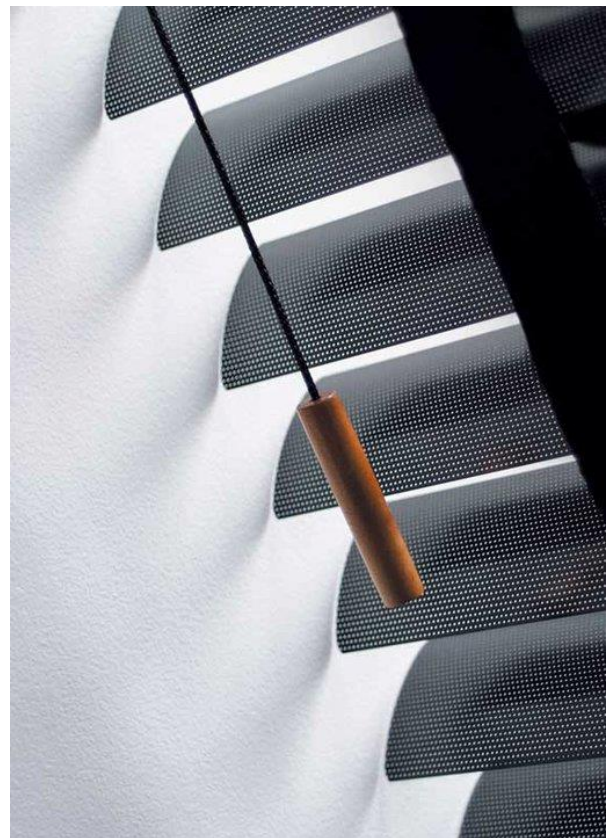
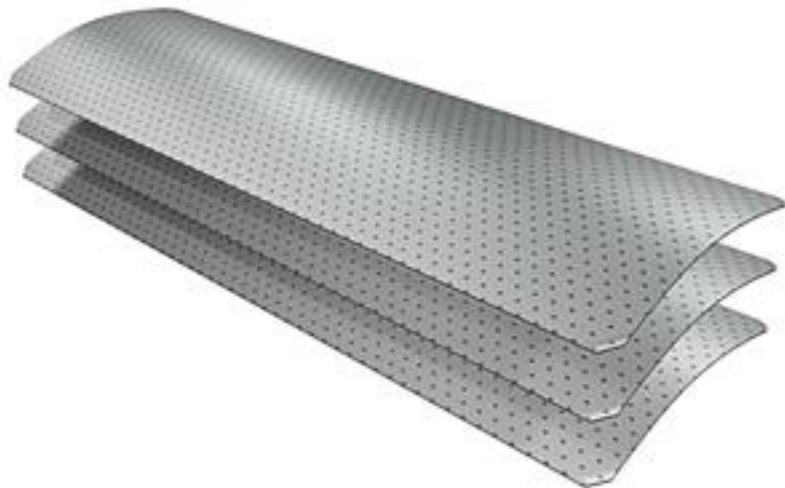
1) ALUMINUM VENETIAN BLINDS



2) PVC VENETIAN BLINDS



3) PERFORATED VENETIAN BLINDS



4) THE MINI VENETIAN BLIND



5) WOODEN VENETIAN BLINDS



Venetian Blinds Motorized (Optional)

Conveniently close or open all your blinds or shades at the same time, perfectly positioned and aligned, with a touch of a button. No more cables or strings that get tangled up! Motorized Blinds motors are also ideal for large windows, high-up or hard to reach window coverings.

The benefits of motorized interior Venetian blinds



The quiet Sonesse range

Dedicated to interior spaces.



The “my” function

Lets you program a preferred position of your blinds or shades so that you can access that position every time at a simple press of “my” button. Set it once and use it as much as you like!

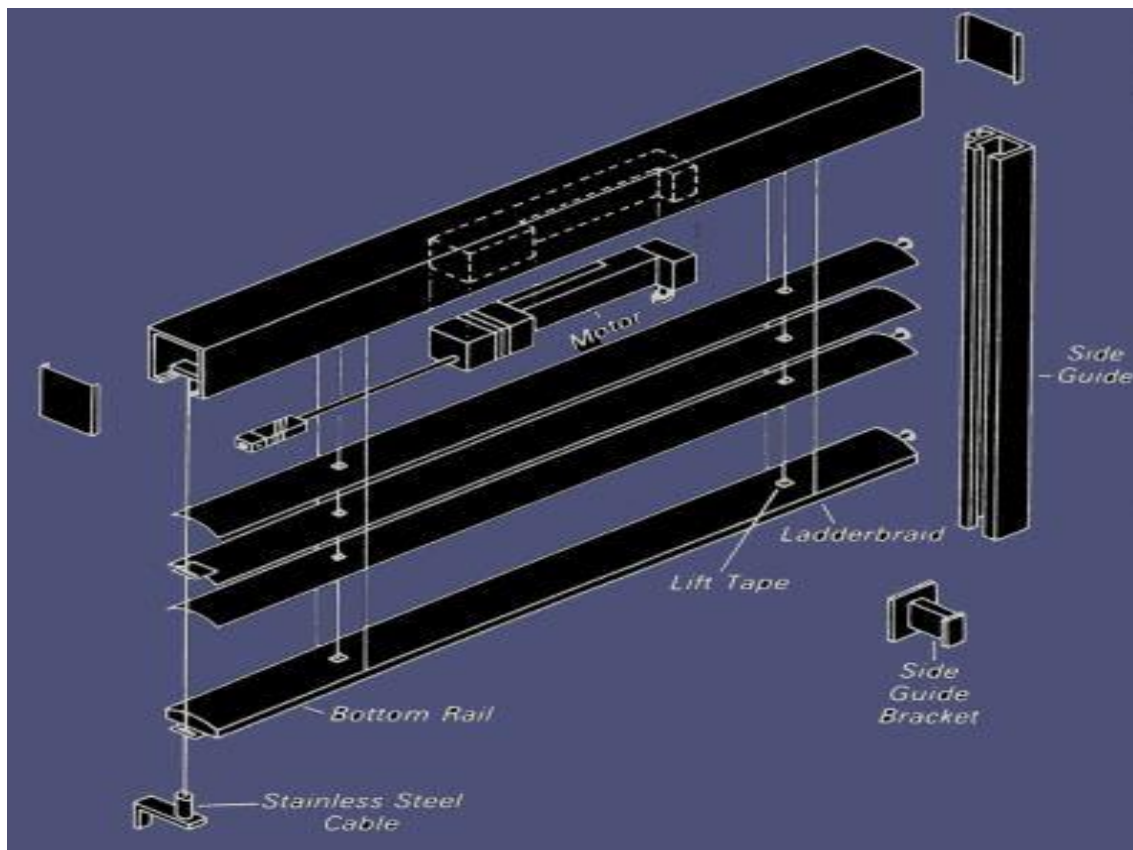


WireFreeTM range is 100% wireless

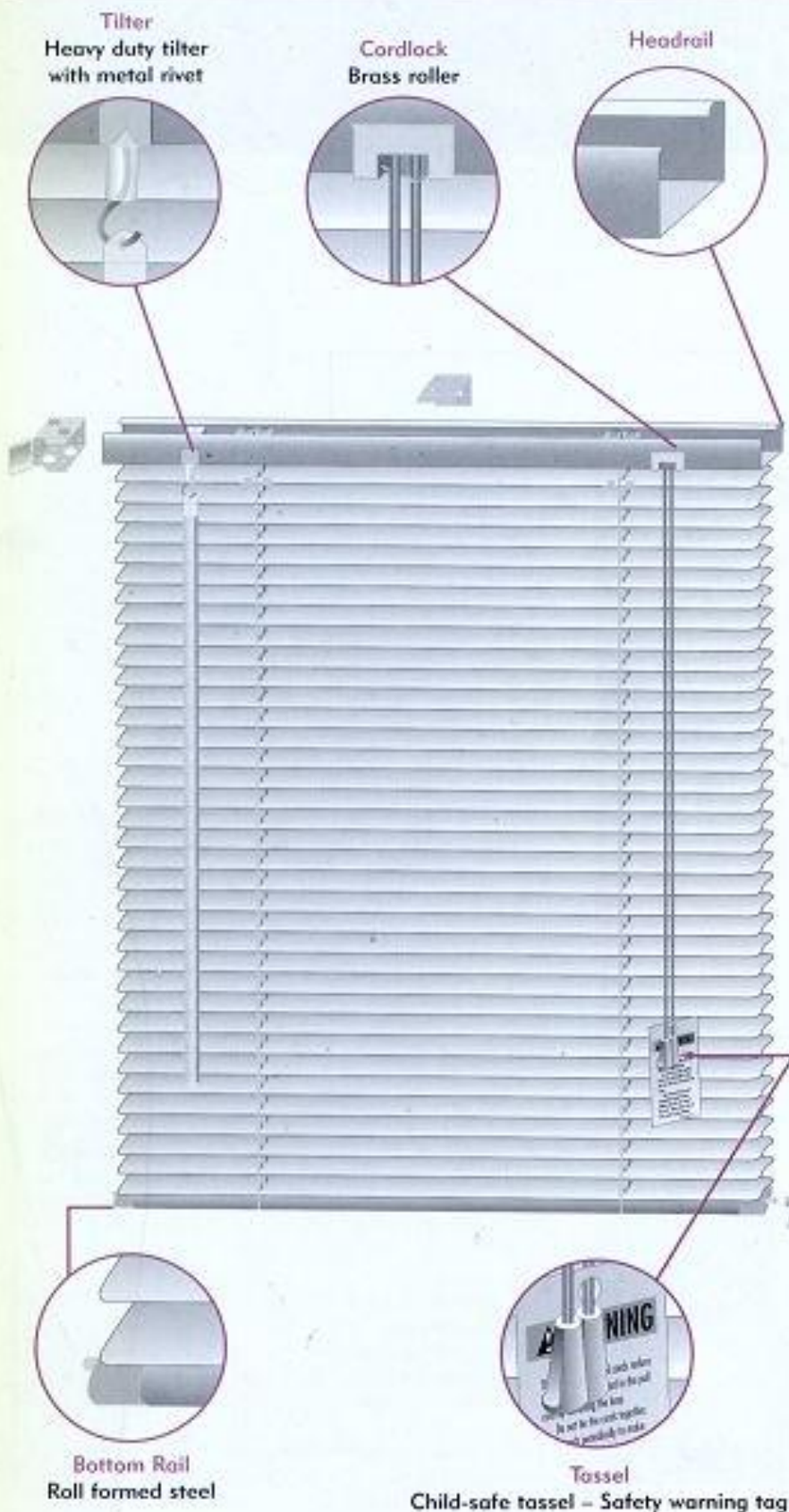
Lets you line up all your blinds perfectly with a centralized remote control.



Ready for home automation and connected house



Venetian Blinds Specification



Specifications:

Headrail:

Roll formed steel 1.070" width x .950" height x .024" thick.

Bottomrail:

Roll formed steel .765" width x .385" height x .030" thick.

Wand:

Clear extruded PVC Hex shape, .270" across flats.

Slat:

Painted aluminum .006" thick x .970" width with a crown of .080".

Tape Roller Support:

Injection molded plastic with metal roller minimizing cord fray.

Top Roller:

Injection molded plastic with ladder locking legs.

Tilt Rod:

Plated steel, "D" shape .150" x .125".

Cordlock:

Injection molded plastic. Smooth brass fixed roller. Knurled floating brass roller.

Tilter:

Injection molded plastic housing with steel wand hook. Gear ratio of 9 to 1. Metal rivet for added strength.

Bottomrail Anchors:

Injection molded plastic face .500" diameter, stem .375" diameter.

Bottomrail Endcaps:

Injection molded plastic with stem for hold down bracket.

Slat Clip:

Painted aluminum.

Cord:

Woven polyester .070" diameter.

Ladder:

Woven polyester .840" spacing x 1.000" width.

Center Support:

Painted steel .040" thick.

Hold Down Brackets:

Injection molded plastic.

Tassel:

Injection molded plastic - bell shaped.

Mounting Bracket:

Painted steel with hinged locking front cover.

Packaging:

Up to 47" wide:
6 per carton

48" wide and larger:
4 per carton



- Window Blinds
- Pool Covers
- Motorized Gates
- Folding Doors
- Roller Shutters & Grills
- Raised Floorings
- Sunshades
- False Ceilings
- Specialized Fly Screens
- Awnings